

M-ATX CASE 2016MB

Introduction ➔

Thank you for purchasing this PC case from LC-Power.
Please read the manual before usage.
Specifications may be subject to change without prior notice.

<01>

Back side fan installation

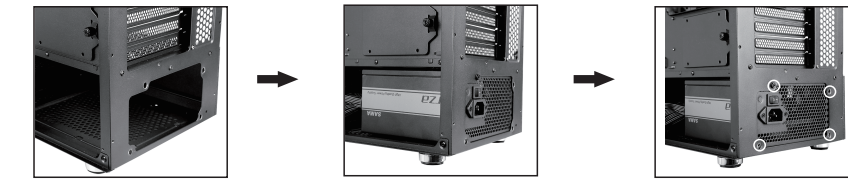


<02>

Top cover fan installation

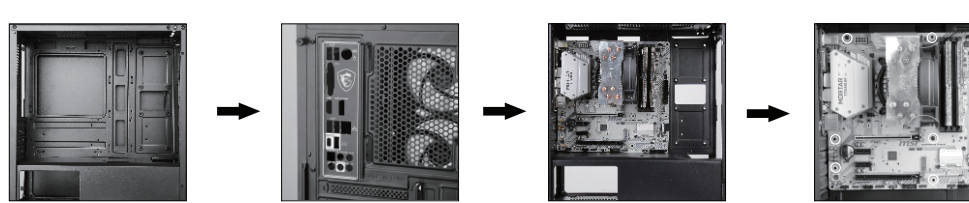


Power supply installation

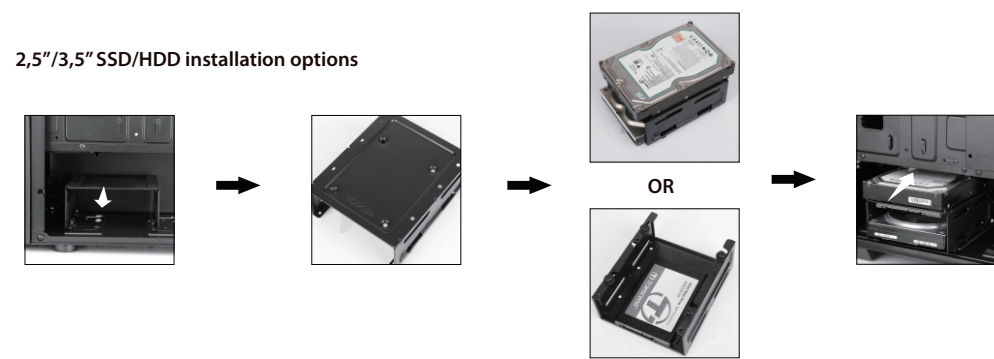


<03>

Mainboard installation



2.5"/3.5" SSD/HDD installation options



2.5" SSD/HDD installation



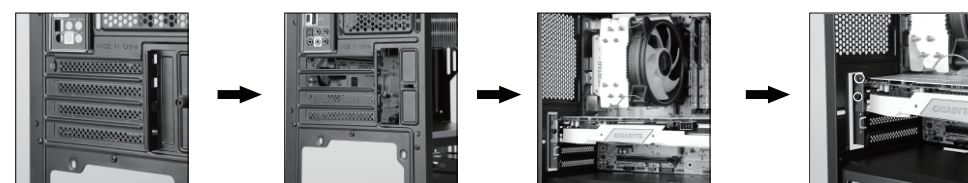
<04>

2.5" SSD/HDD installation

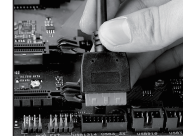


<05>

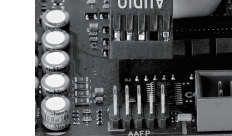
PCI card / GPU installation



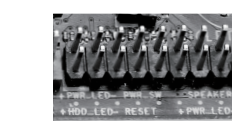
USB 3.0 installation



HD Audio installation



I/O panel installation



<06>

Service & notes ➔

Avoid direct sunlight and a high temperature environment, keep the case far away from fire and heat sources.
Keep it in dry places, keep it away from corrosiveness causing materials.
The product has a two year warranty period from the date of purchase, service issues will be handled by your dealer.
If the case is damaged due to improper operation, the warranty period expires immediately.
Check www.lc-power.com or contact us by e-mail at: service@lc-power.com.

Silent Power Electronics GmbH
Formerweg 8
47877 Willich
Germany

www.lc-power.com
service@lc-power.com

<07>

LC-POWER™
www.lc-power.com

M-ATX CASE 2016MB

Introduction >

Thank you for purchasing this PC case from LC-Power.
Please read the manual before usage.
Specifications may be subject to change without prior notice.

<01>

Back side fan installation

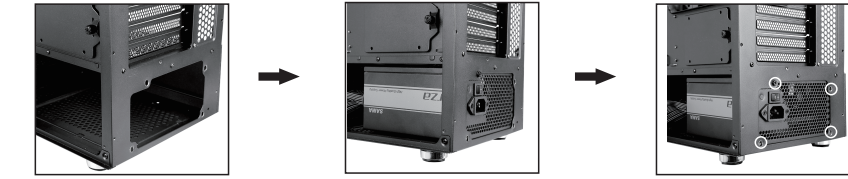


<02>

Top cover fan installation

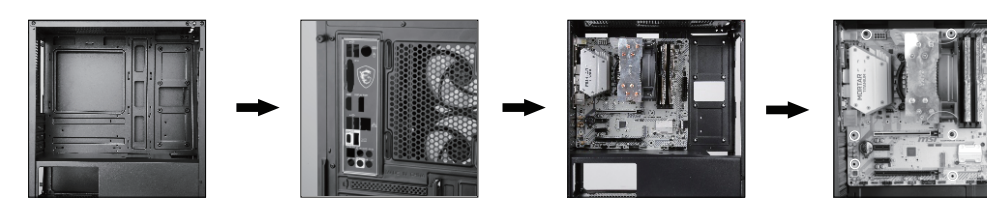


Power supply installation



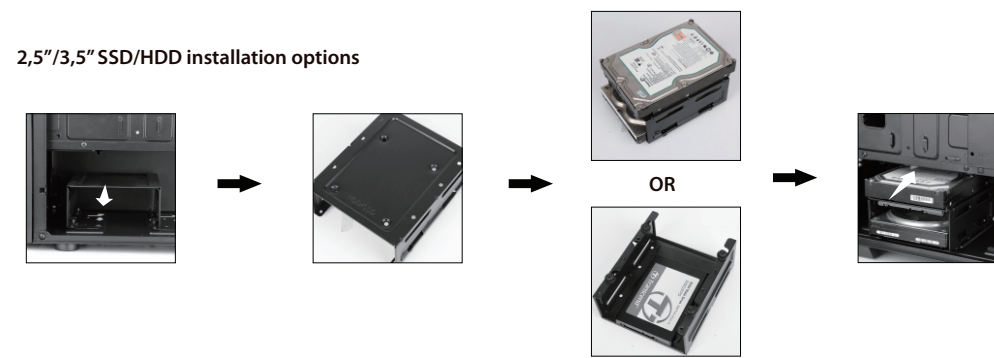
<03>

Mainboard installation



LC-POWER™
www.lc-power.com

2.5"/3.5" SSD/HDD installation options



2.5" SSD/HDD installation



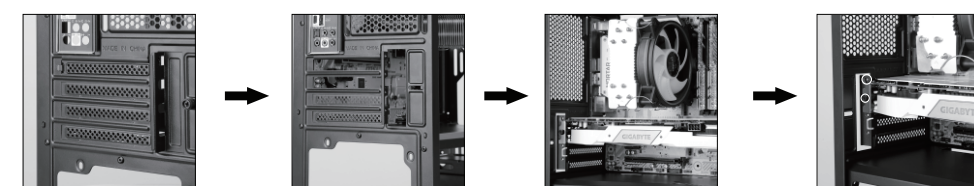
<04>

2.5" SSD/HDD installation

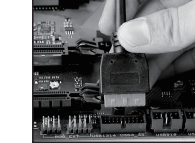


<05>

PCI card / GPU installation



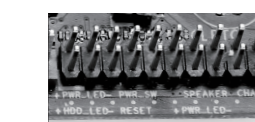
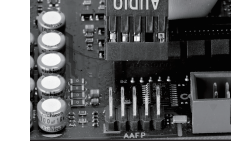
USB 3.0 installation



I/O panel installation



HD Audio installation



<06>

Service & notes >

Avoid direct sunlight and a high temperature environment, keep the case far away from fire and heat sources.

Keep it in dry places, keep it away from corrosiveness causing materials.

The product has a two year warranty period from the date of purchase, service issues will be handled by your dealer.

If the case is damaged due to improper operation, the warranty period expires immediately.

Check www.lc-power.com or contact us by e-mail at: service@lc-power.com.

Silent Power Electronics GmbH
Formerweg 8
47877 Willich
Germany

www.lc-power.com
service@lc-power.com

<07>